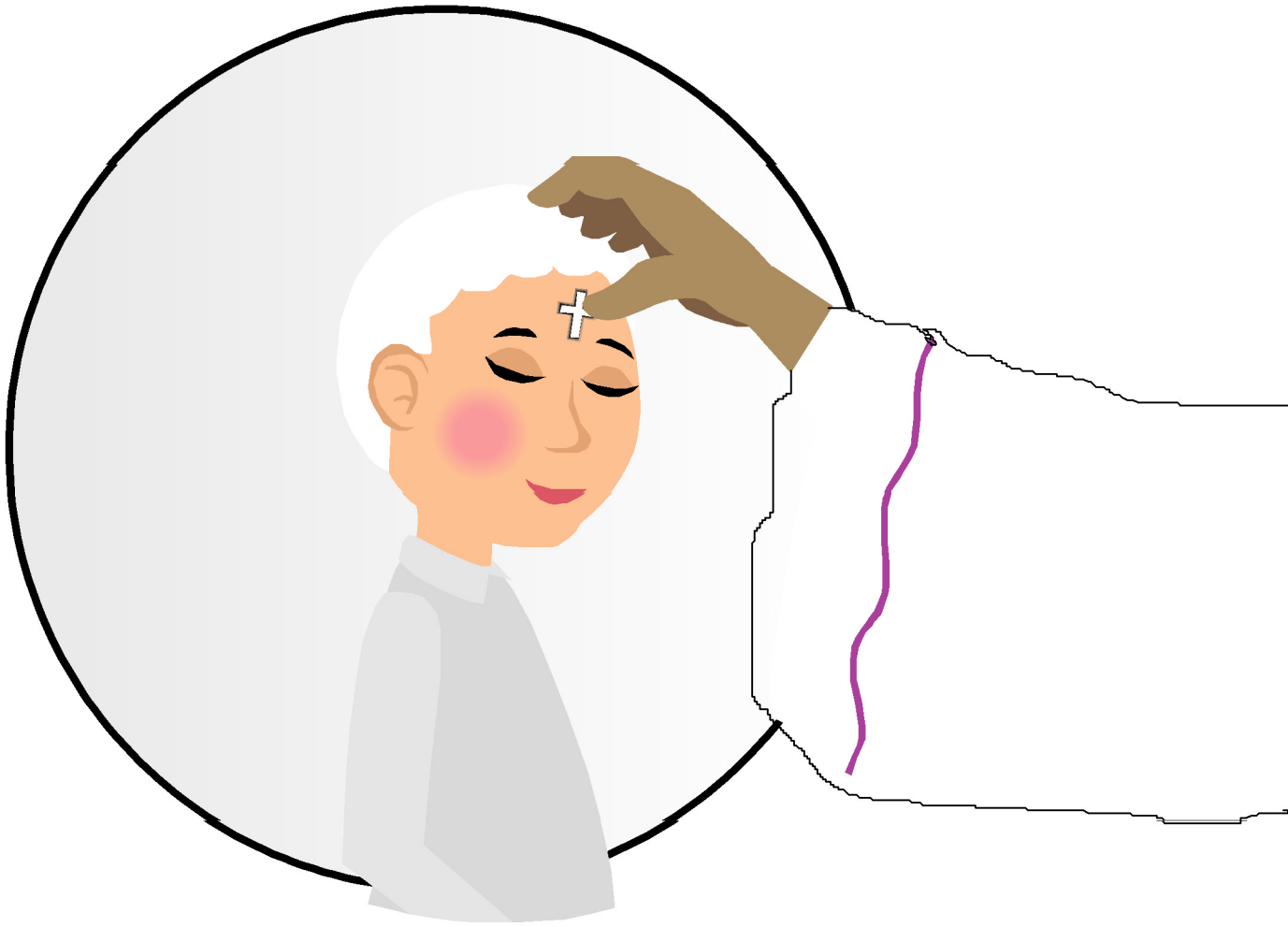


Ash Wednesday



The season of Lent begins with Ash Wednesday. On this day ashes are placed on the foreheads of people to remind them of the sorrow they feel for poor choices they have made, and the necessity to change their lives. The practice dates from the middle ages and is observed by many faith traditions. In the tradition of Brethren in Christ, small pieces of paper are passed out and people write down changes they would like to make in their lives. These pieces of paper are burned and added to ashes left from years past. They are mixed with a small amount of wine so the ministers can make the sign of the cross on our foreheads.

Color the picture above to look like you, and color in the mark of the cross. A hint for coloring the robe of the minister: the color for Lent is purple.